

Conveyor Impact Bars

Reglin Conveyor Impact Bars are a premium grade impact resistant rubber bar with polyethylene top sliding layer and embedded aluminum T-Track.

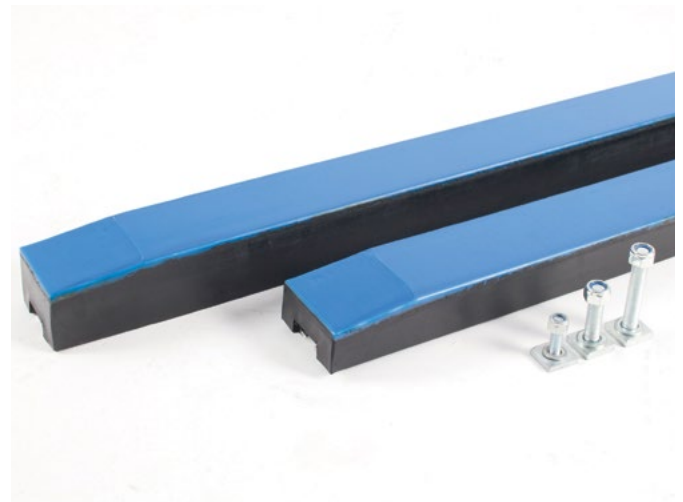
FEATURES

Reglin Conveyor Impact Bars are made from a highly elastic premium 60 Duro rubber compound and will display excellent impact absorbing properties. They feature a high-grade low friction UHMWPE (Ultra High Molecular Weight Polyethylene) top layer.

This UHMWPE top layer is fully vulcanized to the impact bar and offers improved wear life and reduced surface friction, ensuring conveyor belts can slide easily along them even under heavy load.

Reglin Impact Bars feature tapered ends to reduce friction and eliminate catch points as the conveyor belt enters and exits the impact bed, resulting in less system drag and ensuring a smooth transition through the loading zone.

Reglin Conveyor Impact Bars are supplied with aluminium T-Tracks for added stability under impact. They are lightweight and allow for strong and easy mechanical fastening to Impact cradles and other impact bed structures using T-Bolts.



TECHNICAL INFORMATION

| CERAMIC TILE | | |
|--------------------|------------------|------------|
| Polymer | SBR | |
| Colour | Black | |
| Specific Gravity | 1.12 | ASTM D297 |
| Hardness | 60° ± 5° Shore A | ASTM D2240 |
| Tensile Strength | 17.5 MPa (min) | ASTM D412 |
| Elongation @ Break | 450% (min) | ASTM D412 |
| Tear Strength | 30 N/mm (min) | ASTM D624 |
| UHMWPE | | |
| Polymer | UHMWPE | |
| Colour | Blue | |
| Specific Gravity | 0.935 | ASTM D297 |
| Hardness | 66 Shore D | ASTM D2240 |

AVAILABLE SIZES

Reglin Stock Conveyor Impact bars in a range of standard sizes. They are supplied with embedded Aluminum T-tracks designed to be fastened with T-Bolt assemblies. They can also be supplied cut to length to suit specific impact bed or loading zone requirements.

| PART NO. | SIZE | WEIGHT (EACH) |
|-----------------|--|----------------------|
| IB050250 | 50mm x 250mm x 1220mm with AL-65 T-Track | 17 kgs |
| IB050690 | 50mm x 690mm x 1220mm with 3 x AL-65 T-Track @ 220mm centres | 48 kgs |
| IB055 | 55mm x 100mm x 1500mm with AL-65 T-Track (Both Ends Tapered) | 10 kgs |
| IB07512 | 75mm x 100mm x 1200mm with AL-65 T-Track (Both Ends Tapered) | 10.6 kgs |
| IB07514 | 75mm x 100mm x 1400mm with AL-65 T-Track (Both Ends Tapered) | 12.4 kgs |
| IB07515 | 75mm x 100mm x 1500mm with AL-65 T-Track (Both Ends Tapered) | 13.3 kgs |