



SP RUBBER WEAR PLATES

60 Duro | Impact Resistant | Wear Resistant | Natural Rubber | Serrated Profile | Steel Backed

FEATURES

SP Rubber Wear Plates are a washboard wear liner made of a black, premium grade, tear and impact resistant, highly elastic premium grade wear resistant 60 Duro blended Natural and synthetic rubber. It has excellent resistance to large particle impact, gouging and dry sliding abrasion.

SP Rubber Wear Plates are supplied with a vulcanised steel backing plate for stability in the most demanding impact and abrasion applications. This vulcanised steel backing plate allows for extremely strong and easy mechanical fastening to steel structures of equipment.

SP Rubber Wear Plates can be supplied as a full panel or as a custom cut element to suit the shape of equipment, ready for easy installation. They can be supplied as per specifications and drawings or custom designed to meet application requirements.

SP Rubber Wear Panels can be supplied with welded studs or pre-drilled counter bored holes for through bolts and can be supplied flat or curved to suit equipment surface profiles.

TECHNICAL INFORMATION

Polymer	NR/BR	
Colour	Black with steel backing	
Specific Gravity	1.10	ASTM D297
Hardness	60° ± 5° Shore A	ASTM D2240
Abrasion	90mm ³ (max) @ 10N	ASTM D5963
Tensile Strength	20 MPa (min)	ASTM D412
Elongation @ Break	450% (min)	ASTM D412
Tear Strength	80 N/mm (min)	ASTM D624
Temperature Range	-20°C to +70°C	

AVAILABLE SIZES

STANDARD THICKNESS

80mm
Overall thickness includes standard 5mm steel backing

Plates can be supplied with Aluminium T-Tracks upon request

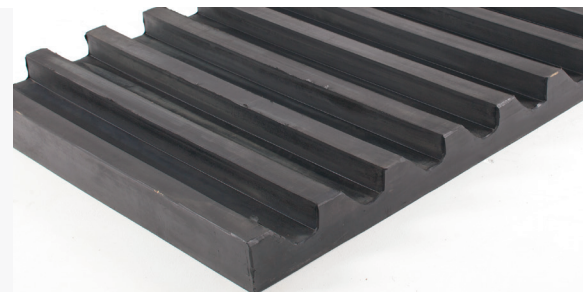
Plates can also be supplied plain for bonding to curved surfaces

PANEL SIZES

SP Rubber Wear Plates can be supplied custom cut to any size required up to a maximum size of 750mm x 1500mm

PANEL PROFILE

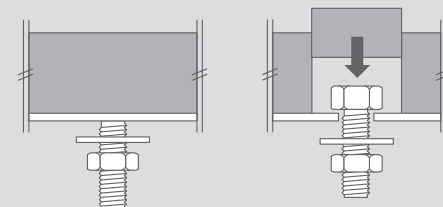
See reverse



APPLICATIONS

SP Rubber Wear Plates have been designed primarily for use as a rubber liner for the wear protection of steel surfaces and equipment in the mining and quarrying industries. These wear plates are ideal for the material impact angle on the equipment surface from 10-50 degrees. The serrated surface is specifically designed to change the angle of impact to the optimal 90 degrees, which maximises the dampening effect of the rubber whilst reducing the wear of the panel itself. Typical equipment to be lined includes:

- > Chutes
- > Rock boxes
- > Tumbler mills
- > Hoppers and surge bins
- > Deflector plates



Welded Stud

Through Bolt

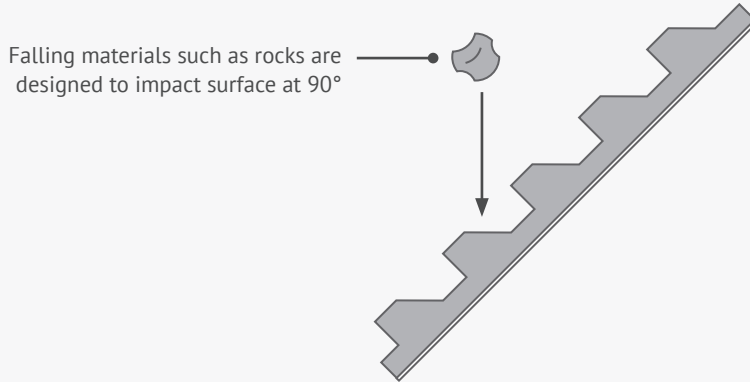


Steel backing

SP RUBBER WEAR PLATES

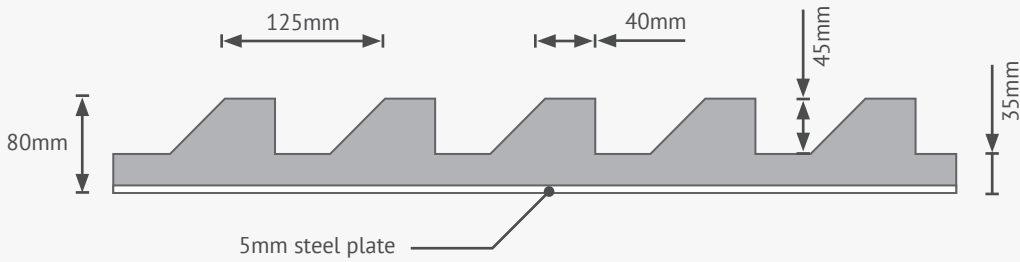
60 Duro | Impact Resistant | Wear Resistant | Natural Rubber | Serrated Profile | Steel Backed

OPTIMAL IMPACT ANGLE

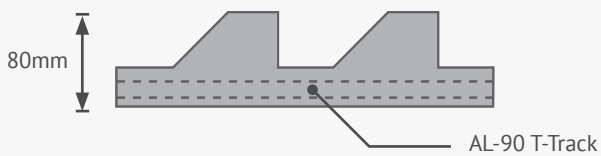


SIZE SPECIFICATION

STEEL BACKING PLATE



AL-90 T-TRACK



PLAIN BACKING

